

SUMOMETRICS

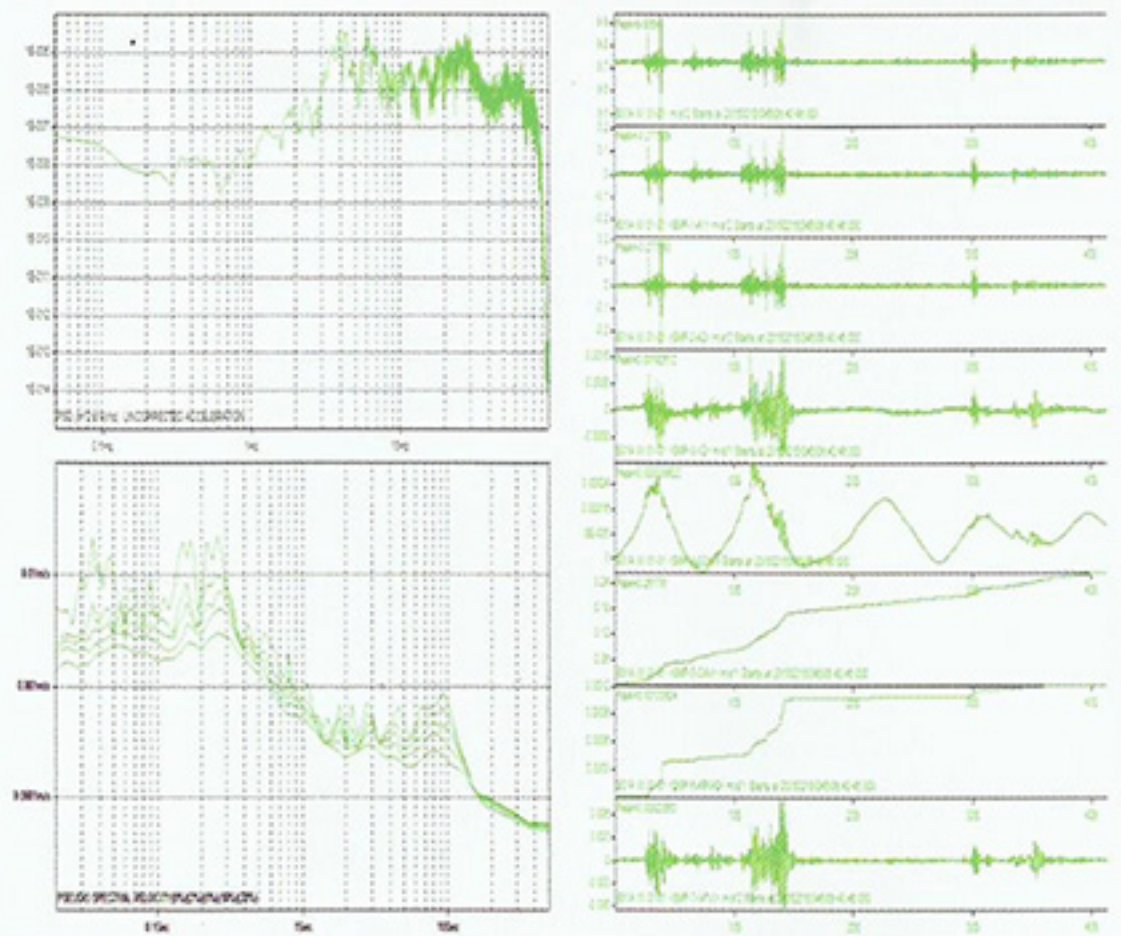
INDUSTRIES, INC.

Seismic/Structural monitoring equipment, digital triaxial accelerograph, accelerometers for high rise buildings, dams, bridges, oil pipelines, machineries, and etc.

REF TEK
A DIVISION OF TRIMBLE

Compass

Interactive Weak and Strong Motion Data Processing Software



PSEUDO SPECTRAL VELOCITY (0%)(2%)(5%)(10%)(20%)

Data Results

Maximum Acceleration	Arias Intensity
Spectral Intensity	Arias Duration (5 - 75)
Predominant Period	Arias Duration (5 - 95)
Mean Period	JMA Intensity
2PI*Vmax / Amax	MMI Intensity
Maximum Velocity	PEIS Intensity
Maximum Displacement	Cums. Abs Velocity

Color-coded Results (MMI Intensity)

I. Instrumental	II. Feeble	III. Slight	IV. Moderate	V. Rather Strong	VI. Strong	VII. Very Strong	VIII. Destructive	IX. Ruinous	X. Catastrophic	XI. Very Catastrophic	XII. Catastrophic
-----------------	------------	-------------	--------------	------------------	------------	------------------	-------------------	-------------	-----------------	-----------------------	-------------------

Station: B31A	Channel: XX 01-01:
Maximum Acceleration	0.277543 m/s ² at Time=2015.02.15 09:40:49.960
Spectral Intensity	0.00258154 cm
Predominant Period	0.0335325 sec
Mean Period	0.0648031 sec
2PI*Vmax/Amax	2PI*0.00057558+0.0413181 sec
Maximum Velocity	0.00182512 m/s at Time=2015.02.15 09:40:57.455
Maximum Displacement	0.000309822 m at Time=2015.02.15 09:40:57.510
Cum. Abs. Velocity	0.261793 m/s
Arias Intensity	0.00120924 m/s
Arias Duration (5-75)	11.185 sec
Arias Duration (5-95)	27.425 sec
JMA Intensity	1.24862
MMI Intensity	2.46212
PEIS Intensity	2.54092
Station: B31A	Channel: XX 01-02:
Maximum Acceleration	0.364757 m/s ² at Time=2015.02.15 09:41:00.050
Spectral Intensity	0.00226846 cm
Predominant Period	0.164486 sec
Mean Period	0.104115 sec
2PI*Vmax/Amax	2PI*0.0475145+0.288542 sec
Maximum Velocity	0.0173312 m/s at Time=2015.02.15 09:40:57.335
Maximum Displacement	0.00673507 m at Time=2015.02.15 09:40:57.655
Cum. Abs. Velocity	1.08716 m/s
Arias Intensity	0.0171711 m/s
Arias Duration (5-75)	10.9 sec
Arias Duration (5-95)	28.265 sec
JMA Intensity	2.97201
MMI Intensity	5.1793
PEIS Intensity	5.01173
Station: B31A	Channel: XX 01-03:
Maximum Acceleration	0.571082 m/s ² at Time=2015.02.15 09:41:00.035
Spectral Intensity	0.0338732 cm
Predominant Period	0.231412 sec
Mean Period	0.238845 sec
2PI*Vmax/Amax	2PI*0.030659+0.248185 sec
Maximum Velocity	0.0226486 m/s at Time=2015.02.15 09:40:59.980
Maximum Displacement	0.0029513 m at Time=2015.02.15 09:40:57.380
Cum. Abs. Velocity	1.20884 m/s
Arias Intensity	0.0266152 m/s
Arias Duration (5-75)	19.47 sec
Arias Duration (5-95)	31.44 sec
JMA Intensity	3.45816
MMI Intensity	5.94996
PEIS Intensity	5.66867

Ordering Information for 3-Points Monitoring Requirements

97112-00	130-SMHR	Accelerograph, 3-Chan, 24 bit
97170-00	130-8019	Assembly, Cable, Net, 130 to Ethernet Hub
97155-00	130-GPS-EXTENDER/-MC75	Extender, RS485, 130-GPS- End, for use w/130-MC,75'
97151-01	130-GPS-REPEATER-KIT	Repeater, RS485, 130GPS, Complete Station
97347-00	PT06SE1210PSR	Connector, 12 Shell, 10 Pin, Cable Plug, Crimp (for stock)
97168-00	130-8039	Assembly, Power Supply, AC, for REFTEK Recorders, Pwr A
97150-00	130-GPS	GPS Receiver / Clock
97266-00	MBLCRA1212P	Battery, 12v, Lead - Acid 12 Ahr, Sealed
97279-00	OPDOCSET/CD-130	Manual, Operations, Ref, REF Tek 130, CD
97351-06	130-8354	Assembly, Cable, 130-GPS-Extender to 130-MC
97163-00	130-8015-33	Assembly, Cable, GPS to 130DAS, Ext,33'(10m)